



FASCO MODEL	TYPE	HP	VOLTS	RPM	SPD.	AMPS	ROT.	BRNG.	SHAFT DIM.	"A" DIM.	CROSS REF.	FIG.	NOTES
AIR AMERICA CORP.													
▶ D1028	SP	1/8	115	1050	1	3.3	CW	SLV	1/2 x 2-1/2	3 1/2	A0510B2008	A	
AIR PLUS													
▶ A087	PSC	1/6	115/230 50/60Hz	2400	1	2.8/1.1	CCW	SLV			7062-4687	B	
ALADDIN STEEL													
▶ A120	SP	1/40	120	3000	2	1.1	CW	BALL			230-1460, 7002-2983	C	
AMANA													
D1062	PSC	1/20-1/30-1/40	265	1100	3	4-.3-2	CW	SLV	1/2 x 3-1/2	3 3/4	Amana C-6397902, Emerson K48HXCNB-1458, 5KCP29FK5258S	D	40
D1056	PSC	1/20-1/30-1/40	208-230	1100	3	4-.3-2	CW	SLV	1/2 x 3	3 5/8	Amana 900 Unit, C61147-5, 5KCP29FK886S	E	39,40
D1058	PSC	1/20-1/30-1/40	265	1100	3	5-.3-2	CW	SLV	1/2 x 2-1/2	3 5/8	5KCP29FK885S, Amana C-61147-6	F	
A129	SP		115	3250	1	1.95	CW				Amana, 7021-9064, 7021-9259	G	
A158	PSC		115	1550	1	4.5	CW				Amana, 7062-3151	H	
A160	SP		115	3000	1	1.6	CW				Amana, 7002-2407	I	
▶ A180	SP	1/30	115	3400	1	1.8	CCW	BALL			7021-9625, 20190601	J	
▶ A185	SP	1/30	115	3000	1	1.15	CW	SLV			7021-9316, 105854-04	K	
▶ A280	SP	1/25	115	3000	1	1.5	CW	SLV			7021-7794, D986868	L	
▶ A283	SP	1/25	115	3000	1	1.5	CCW	SLV			7021-8730, D9868617	L	
▶ A286	SP	1/35	208/230	3125	1	0.6	CW	SLV			7021-9398, 11096904	K	
▶ A287	SP	1/25	115	3000	1	1.15	CW	SLV			7021-9655, 10585405	K	
▶ A289	SP	1/32	208/230	3125	1	0.75	CW	BALL			7058-0081, 20351402	M	
AMERICAN AIR FILTER													
▶ D1065	PSC	1/6	277	1600	1	0.9	CCW	SLV	1/2 x 2-1/2	3 1/3	ZCAABBWY15141, IWQC5827, 5KCP29DK3697T	N	40
▶ D827	PSC	1/8	115	700	1	2.5	CCW	BALL	1/2 x 2	5 1/2	7-150444-02	O	136

NOTES: 39: Rotation determined by viewing lug end 40: 4M 370V Capacitor 136: 6M 370V Capacitor



FIG. A D1028



FIG. B A087



FIG. C A120



FIG. D D1062



FIG. E D1056



FIG. F D1058



FIG. G A129



FIG. H A158



FIG. I A160



FIG. J A180



FIG. K A185, A286, A287



FIG. L A280, A283



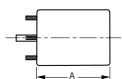
FIG. M A289



FIG. N D1065



FIG. O D827



NOTE: Rotation is determined by looking at shaft end. Shaft length is measured from motor face.

▶ NEW ITEM! See page 113 for a complete listing of all our new products.

Thermally protected • UL recognized • CSA or ULc certified



FASCO MODEL	TYPE	HP	VOLTS	RPM	SPD.	AMPS	ROT.	BRNG.	SHAFT DIM.	"A" DIM.	CROSS REF.	FIG.	NOTES
AMERICAN WATER HEATER													
▶ W1	SP	1/25	115	3210	1	1.9	CCW	SLV			7021-10060, 3000288	A	137
AO SMITH													
▶ D5488	PSC	1/6-1/8	208-230	825	1	1	REV	BALL	1/2 x 6-5/8	4	ORM5488B	B	94
▶ D5489	PSC	1/3-1/4	208-230	825	1	1.8	REV	BALL	1/2 x 6-5/8	4 3/4	ORM5488B	B	94
▶ W2	SP	1/14	115	3275	1	2.3	CW	BALL			7021-10770, 183505-000	C	137
▶ W4	SP	1/20	115	3400	1	1.8	CCW	SLV			7021-10910, 183381-000	D	137
APRILAIRE													
▶ D1110	SP	1/55	115	1300	1	.7	CW	BALL	1/4 x 1-7/8	3 5/8	7163-8633, 10002351	E	
▶ D1114	SP	1/11	115	1250	1	.5	CW	SLV	1/4 x 3-1/8	2 1/2	7163-7448, 33110076	F	
ARKLA													
D795	PSC	1/3	115	825	1	6.1	REV	BALL	1/2 x 6	5 3/4	Gas Heat Pump, K55HXSFN8042	G	
ARMSTRONG													
A155	SP		115	3000	1	1.4					7021-10046	H	
BOHN													
D1124	SP	1/20	115	1500	1	2.1	CCW	SLV	5/16 x 3	3	5KSM59JSK143S, 5KSM59JS5036S	I	33
D1126	SP	1/15	230	1500	1	1.1	CCW	SLV	5/16 x 3	3 1/2	5KSM59LS2262AS	I	33
D1125	PSC	1/12	208-230	1500	1	0.4	CCW	SLV	5/16 x 2-5/8	3 3/4	7190-0442	J	20,34
BRADFORD WHITE													
▶ W5	SP	1/14	115	3275	1	2.5	CW	BALL			7021-10712, 239-42133-00B	K	137
▶ W6	SP	1/15	115	3000	1	2.2	CCW	SLV			239-4061 4-00C	L	137
BROAN													
▶ K610	SP	1/60	115	3000	2	.88-.68	CCW	SLV	.217 x 1.3		Motor 30080011, Model Y2-52000	M	
▶ K612	SP	1/65	115	3000	1	0.8	CW	SLV	.25 x 2.7		Model 162 (Before 1980)	N	
▶ K611	SP	1/100	115	3000	1	0.67	CCW	SLV	.25 x 2.45		Model 162 (After 1980)	O	

NOTES: 20: 4M 370V Capacitor included 33: Shell Turbo 68, low temp. oil (-40°F) 34: Bolt Circle = 3.15" 94: Has 4 drilled and tapped holes in shell 137: Water heater draft inducer



FIG. A W1



FIG. B D5488, D5489



FIG. C W2



FIG. D W4



FIG. E D1110



FIG. F D1114



FIG. G D795



FIG. H A155



FIG. I D1124, D1126



FIG. J D1125



FIG. K W5



FIG. L W6



FIG. M K610



FIG. N K612



FIG. O K611

FASCO MODEL	TYPE	HP	VOLTS	RPM	SPD.	AMPS	ROT.	BRNG.	SHAFT DIM.	"A" DIM.	CROSS REF.	FIG.	NOTES
BROAN (cont.)													
D1087	SP	1/12	115	1050	1	2.9	CW	SLV	1/2 x 2-1/3	2 5/8	99-08-0178, 7151-3160	A	
K110	SP	1/75	115	3000	1	0.9	CCW	SLV	.217 x 2.37		99-08-0165, 670A	B	
BRYANT/CARRIER													
D803	PSC	1/3-1/4	230	1075	2	2.6-2.2	REV	SLV	1/2 x 3-1/2	4 1/2	K55HXLKK-5918, HC41VB701	C	
D1179	SP	1/30	115	3000	1	1.5	CW	SLV	5/16 x 2	3 1/2	BDP P251-2916, FRANKLIN 8251510360	D	
D1180	SP	1/20	115	3300	1	1.9	CW	SLV	5/16 x 2-1/8	3 5/8	Carrier HC27UE120, BDP 398A, BDP P251-2307, U.E. JAIP053N, UE Stock 580	D	
BRYANT/PAYNE													
D847	PSC	1/8	208-230	1125	1	0.9	CCW	SLV	1/2 x 3-1/2	3 3/4	K1543, HC35VE-230, KA55CGD-9658	E	
BUCK STOVE													
D1138	SP	1/50-1/80-1/140	115	1500	3	.9-.6-.5	CW	SLV	5/16 x 2-1/2	4	R22CCW270ZD, 7163-6045	F	
D1139	SP	1/50-1/80-1/125	115	1500	3	0.88	CW	SLV	2-1/2 x 5/16 x 1-1/8	2 13/16	R22CW206MD	G	
BUTLER VENTILATOR													
D1066	SP	1/10	115	1050	1	3.6	CW	SLV	1/2 x 2-3/4	3 7/8	846PY4V, 2414	H	
CAMCO													
D1119	SP	1/90	240	1500	1	0.34	CCW	SLV	1/4 x 1-1/2	2 1/4	Universal JBIP04410V, Electrohome 2868-405-173, Rotom R302	I	
CARRIER													
D455	SP	1/30	115/230	3000	1	1.3-7	CCW	BALL	1/4 x 3-7/8	5 7/8	Draft Booster/Flue Exhaust Switch Motors	J	138
D456	SP	1/15	115/230	3000	1	2-1	CW	BALL	1/4 x 2-3/4	6 1/2	Draft Booster/Flue Exhaust Switch Motors	K	138
D457	SP	1/15	115/230	3000	1	2-1	CCW	BALL	1/4 x 2-3/4	6 1/2	Draft Booster/Flue Exhaust Switch Motors	K	138

NOTES: 138: Includes shaft bushing



FIG. A D1087



FIG. B K110



FIG. C D803



FIG. D D1179, D1180



FIG. E D847



FIG. F D1138



FIG. G D1139



FIG. H D1066



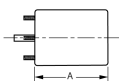
FIG. I D1119



FIG. J D455



FIG. K D456, D457



Thermally protected • UL recognized • CSA or ULc certified
NOTE: Rotation is determined by looking at shaft end. Shaft length is measured from motor face.



FASCO MODEL	TYPE	HP	VOLTS	RPM	SPD.	AMPS	ROT.	BRNG.	SHAFT DIM.	"A" DIM.	CROSS REF.	FIG.	NOTES
CARRIER (cont.)													
D458	SP	1/15	208-230	3000	1	1	CW	BALL	1/4 x 2-3/4	6 1/2	Draft Booster/Flue Exhaust Switch Motors	A	138
D1174	SP	1/15	460	3000	1	0.6	CW	BALL	1/4 x 2-1/2	6 3/4	Carrier HC34AU725A, Universal JB1P044NV, HC24AU725	A	139
D1178	PSC	1/15	208-230	3450	1	0.45	CW	BALL	1/4 x 2-3/4	6 3/4	Carrier HC680001, Fasco 7162-3829	B	
D864	PSC	1/6-1/8-1/10	208-230	1040	1	1.3-1.2-1.1	CW	SLV	2-1/8 x 1/2 x 7-1/4	3 3/4	124279, 128560, 124276, 7126-0103, 7126-0043	C	39,42
D842	PSC	1/5	230	1075	1	1.3	CW	SLV	1/2 x 3 x 1/4	3 3/4	HC37VE230, Cond. Round unit	D	40
D848	PSC	1/5-1/6-1/8	265-277	1040	1	1.1-8-7	CW	SLV	3 x 1/2 x 7	3 1/2	51PH124275, HC37MB-730	C	39,42
D463	SP	1/30	208-230	3000	1	0.65	CW	BALL	5/16 x 2-1/2	3 7/8	HC24HE230	E	
D1182	PSC	1/16	208-230	3450	1	0.57	CCW	SLV	5/16 x 3-1/3	4 1/2	7162-3367, HC30GB230B, K33HXCCP-915, HC30GB230	F	47
D459	SP	1/15	230/460	3000	1	1.2-6	CW	BALL	1/4 x 3	7	HC24AU725A, JB1P044, AB1S078, JB1R039, AB1S029	G	
D844	PSC	1/4	230	1625	1	1.5	CW	SLV	1/2 x 3	3 1/2	HC37ME268, 5KCP39BG7524S	H	40
D843	PSC	1/4-1/5	208-230	1075	1	2.2-2	REV	SLV	1/2 x 4-1/4	4	F48SG6MA10, F48SG6MA16, F48SG6MA28, F48SG6MA37, F48SJ6MA28, HC37MZ220, HC39VE608, HC39ML706, HC39ME720	I	107
D802	PSC	1/2	460	1050	1	0.9	REV	BALL	1/2 x 3-1/3	5 1/2	Carrier HC44VL463A, AO Smith FEH1056S, GE 5KCP39PGH600CS	J	92
S2846	PSC	1/2	230/460	1075	1	3.9-2	REV	BALL	1/2 x 5-3/8	6 1/2	Canopy Type, Outdoor Condenser Fan Motor	K	99

NOTES: 39: Rotation determined by viewing lug end 40: 4M 370V Capacitor 42: 3M 370V Capacitor 47: Has Hall Effect sensor 92: 10M 370V Capacitor 99: 7.5M 440V Capacitor 107: 5M 440V Capacitor 138: Includes shaft bushing 139: Does not have shaft bushing



FIG. A D458, D1174



FIG. B D1178



FIG. C D864, D848



FIG. D D842



FIG. E D463



FIG. F D1182



FIG. G D459



FIG. H D844



FIG. I D843



FIG. J D802



FIG. K S2846

FASCO MODEL	TYPE	HP	VOLTS	RPM	SPD.	AMPS	ROT.	BRNG.	SHAFT DIM.	"A" DIM.	CROSS REF.	FIG.	NOTES
CARRIER (cont.)													
D838	PSC	3/4-1/2-1/3-1/4	115	1075	4	11.2-9.7-7.5-6.4	REV	SLV	1/2 x 6-1/2	5 1/4	HC45SE116, SC435X101, HC43SE116	A	
S2848	PSC	3/4	230/460	1075	1	4.7-2.4	REV	BALL	1/2 x 6	7 3/4	Canopy Type, Outdoor Condenser Fan Motor	B	101
CARRIER/WHIRLPOOL													
D1176	PSC	1/15-1/25	115	1550	2	1-8	DS	SLV	4-7/8 x 3/8 x 4-7/8	4	130096, 202466	C	40
CHAMPION COOLER													
D1069	SP	1/10-1/15	115	1040	2	3.5-2.2	DS	SLV	3 x 3/8 x 3	2 5/8	7151-2925, 7151-0109, MP2500	D	
CHROMALOX													
D1118	SP	1/30	240	1500	1	0.6	CW	BALL	5/16 x 3-1/2	2 13/16	2868-811-005B, 2868-505-016, 2686-511-027A	E	
CHRYSLER AIRTEMP													
D1022	PSC	1/5-1/6-1/8	208-230	1100	3	1.6-1.1-1	CW	SLV	2-3/8 x 1/2 x 2-3/4	3 7/8	3704387, 2874493, 2874495	F	39
COLEMAN													
A088	SP	88CFM	115	3200	1	1.3	CW				7021-5478	G	
D178	SP	1/8-1/11	115	1050	2	4.5-3.4	CW	SLV	1/2 x 4	3 1/4	Blower Motor	H	
D408	SP	1/150	115	3000	1	0.5	CW	SLV	1/4 x 1-1/2	5 1/2	7995-316, 7121-5906	I	
CONSOLIDATED INDUSTRIES													
A128	SP		120	3000	1	0.9	CW				7021-6376, 7021-9404	J	
COPELAND													
D783	PSC	1/4	208-230	1625	1	1.5	REV	SLV	1/2 x 6	4	3047, 050-0238-00	K	
DUOTHERM													
D1080	SP	1/6	115	1050	1	7.9	CW	SLV	1/2 x 4	4 1/2	3-14826, 100,000 BTU Furnaces	L	
D1081	PSC	1/6-1/8-1/10	115	1625	3	2.4-1.9-1.5	REV	SLV	3-1/2 x 1/2 x 3-5/8	4 7/8	3-9650, 12,000-13,000 BTU's, 5KCP29MG40115, 8743810260, 3-18440	M	92

NOTES: 39: Rotation determined by viewing lug end 40: 4M 370V Capacitor 92: 10M 370V Capacitor 101: 20M 370V Capacitor



FIG. A D838



FIG. B S2848



FIG. C D1176



FIG. D D1069



FIG. E D1118



FIG. F D1022



FIG. G A088



FIG. H D178



FIG. I D408



FIG. J A128



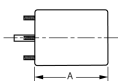
FIG. K D783



FIG. L D1080



FIG. M D1081



Thermally protected • UL recognized • CSA or ULc certified
NOTE: Rotation is determined by looking at shaft end. Shaft length is measured from motor face.



FASCO MODEL	TYPE	HP	VOLTS	RPM	SPD.	AMPS	ROT.	BRNG.	SHAFT DIM.	"A" DIM.	CROSS REF.	FIG.	NOTES
DUOTHERM (cont.)													
D1001	SP	1/15	115	1000	1	3.2	CW	SLV	3/8 x 3-1/4	2 1/3	3-9930	A	
ECONOMITE/MID-CONTINENT GAS BURNER													
D1151	SP	1/40	115	1500	1	1.2	CCW	SLV	5/16 x 3-1/4	2 3/4	AA2P026N	B	
EMERSON													
D1033	PSC	1/5-1/6-1/8	208-230	1400	3	1.6-1.5-1.3	DS	SLV	2-3/4 x 1/2 x 3-1/2	3 3/4	Quiet Cool	C	
EVANS/ARMSTRONG/LSI/HOME													
D825	PSC	1-3/4	230	1625	2	6.2-5.6	REV	SLV	1/2 x 3	6 3/4	5KCP35SG6445	D	92
EVCON													
K629	SP	1/85	115	2950	1	0.67	CW	SLV	1/4 x 1-1/8		7102-2187	E	
A156	SP		115	3000	1	1.1	CW				Evcon, 7021-8935	F	
EXCEL COMFORT													
A100	SP	1/45	115	3000	1	1.21	CW	BALL			7058-0280, 20093603/B	G	
FASCO													
K102	SP	1/200	115	3000	1	0.64	CW	SLV	.181 x 1.5		Model 2435	H	
K100	SP	1/100	115	3000	1	0.71	CW	SLV	.181 x 1.11		0648-0027 Ventilator	I	
K101	SP	1/150	230	3000	1	0.58	CCW	SLV	.217 x 1.34		Model 2540, 7102-0001 Motor	J	
D1159	SP	1/130	115	1500	1	0.45	CCW	SLV	5/16 x 1-1/8	2 1/8	7163-1845, VENT 656, VENT 293A, VENT PV7896	K	
D1160	SP	1/100	115	1480	1	0.58	CW	SLV	5/16 x 1-1/2	2 1/8	7163-2593, 661, 663, 668, 763, 768, 761	L	
D1162	SP	1/100	115	1500	1	0.6	REV	SLV	5/16 x 1	3 1/2	7163-9809, 7163-1541, Model 659 Vent	M	
D1161	SP	1/15-1/25	115	1500	1	2.9-1.9	CCW	SLV	5/16 x 2	4 1/4	Several Blower Applications	N	
D824	PSC	1/4-1/8	115	1100	2	3.2-2.4	REV	BALL	1/2 x 3-1/2	5 3/4	Pedestal Fan 7126-0922, 7126-2594, 7126-0485, 7126-0936	O	40

NOTES: 40: 4M 370V Capacitor 92: 10M 370V Capacitor



FIG. A D1001



FIG. B D1151



FIG. C D1033



FIG. D D825



FIG. E K629



FIG. F A156



FIG. G A100



FIG. H K102



FIG. I K100



FIG. J K101



FIG. K D1159



FIG. L D1160



FIG. M D1162



FIG. N D1161



FIG. O D824

FASCO MODEL	TYPE	HP	VOLTS	RPM	SPD.	AMPS	ROT.	BRNG.	SHAFT DIM.	"A" DIM.	CROSS REF.	FIG.	NOTES
FASCO (cont.)													
D820	PSC	1/3-1/4	120	1050	2	4.8-4.5	REV	SLV	1/2 x 2	4 1/4	Whole house fans, 7126-1194, 7126-0545, 7126-0158, 7126-0460, 7126-1195	A	
V001	GEAR		115	5	1	.88	CW		1/2 x 1		V07959ABD9	B	
V002	GEAR		120	2	1	1.26	CW		3/8 x 1		V07926AAD9	C	
V003	GEAR		120	1	1	.51	CW		3/8 x 1		V07959AAD9	D	
FEDDERS													
D441	SP	1/80	115	1500	1	0.6	CCW	SLV	1/4 x 1	2 1/8	Fedders, Oasis, Whirlpool Port Dehumidifiers	E	
D186	SP	1/20	460	1500	1	0.4	CW	SLV	5/16 x 2-1/3	2 7/8	Roof Top A/C	F	
D1012	SP	1/15-1/20-1/25	115	1550	3	2.3-1.9-1.6	DS	SLV	3 x 3/8 x 3	3 3/8	RMR, RY1302, 5206-00025-001, Y24CW50, 7190-0163	G	
D1015	SP	1/10-1/20	230	1050	2	1.5-1	DS	SLV	2-5/8 x 1/2 x 2-5/8	3 1/4	Window AC Motors, S196-10-6 & S196-101-6	H	
D1010	SP	1/8-1/12-1/15	115	1050	3	4.4-3-2.3	DS	SLV	3-1/3 x 1/2 x 2-3/4	3 3/8	Window AC Motor, S196-20-2	I	
D1011	SP	1/6-1/12-1/15	208-230	1050	3	2.5-1.6-1.2	DS	SLV	3-1/3 x 1/2 x 2-3/4	3 1/4	Window AC Motors, S196-42-1, S296-161-3	I	
D884	PSC	1/6-1/8-1/10	115	1050	3	2.3-2-1.8	DS	SLV	5 x 1/2 x 4	3 3/4	S196-59-1, 2:72-1, 2:73-1, 2:74-1,2,3	J	
D882	PSC	1/5	230	1080	1	1.5	CW	SLV	1/2 x 4-1/4	3 1/2	Condenser Fan, S196-179-1	K	140
D1016	PSC	1/4	230	1100	1	2	CW	SLV	1/2 x 4-1/8	3 7/8	Condenser Fan, S196-18-2	L	
D888	PSC	1/3	208-230	1240	1	2.1-1.9-1.5	DS	SLV	3-3/4 x 1/2 x 3-3/4	5 1/4	S206-00014-004, Fasco 7124-0589	M	
A159	SP	159CFM	230	1550	1	0.5					AK4K84BX, 11-7096	N	
A161	SP	161CFM	230	1600	1	0.6					Brinkley 8353920103, Fedders	O	

NOTES: 140: 7.5M 370V Capacitor installed



FIG. A D820



FIG. B V001



FIG. C V002



FIG. D V003



FIG. E D441



FIG. F D186



FIG. G D1012



FIG. H D1015



FIG. I D1010, D1011



FIG. J D884



FIG. K D882

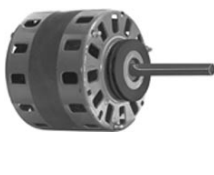


FIG. L D1016



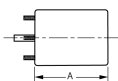
FIG. M D888



FIG. N A159



FIG. O A161



Thermally protected • UL recognized • CSA or ULc certified
NOTE: Rotation is determined by looking at shaft end. Shaft length is measured from motor face.
 NEW ITEM! See page 113 for a complete listing of all our new products.



FASCO MODEL	TYPE	HP	VOLTS	RPM	SPD.	AMPS	ROT.	BRNG.	SHAFT DIM.	"A" DIM.	CROSS REF.	FIG.	NOTES
FRIEDRICH													
D868	PSC	1/3-1/4-1/5-1/6-1/7	230	1075	5	2.1-1.5-1.2-1-9	CCW	SLV	2-3/4 x 1/2 x 2-1/4	4 3/4	5KCP39MG90965, 5KCP39KGE9925, 5KCP39LGD8045, 5KCP39LGG7205, 5KCP39LKG010T, 5KCP39MG7145S, 5KCP39MG9679S, 5KCP39LGM011T	A	39
FRYMASTER													
A110	SP	1/70	115 50/60Hz	3212	1	.76	CW	BALL			7021-0898	B	
A111	SP	1/40	208-240	3200	1	0.8	CW	BALL			7021-11294, 8073637	C	
GAFFERS AND SATTLER													
D862	PSC	1/2-1/3	208-230	1075	2	3.2-3	DS	SLV	2-5/8 x 1/2 x 2-1/2		Roof Top A/C Direct, Pak 1.5 & 2.0 EA	D	48
GENERAL ELECTRIC													
D896	PSC	1/5-1/8	208-230	1625	2	1.1-.7	CCW	SLV	2-7/8 x 1/2 x 2-1/4	3 3/4	KCP39DGD7795, WJ94X0518	E	40
D897	PSC	1/5-1/6-1/8-1/10	230	1075	4	1.5-1.1-1-8	CW	SLV	2-3/8 x 1/2 x 2-1/2	3 3/4	KCP39EG5480S, 5KCP39DGK014T, 5KCP39EG5480S, WP94X1, WJ94X162	F	39,40
D898	PSC	1/5-1/8-1/10	265	1075	3	1.3-.9-7	CW	SLV	2-3/8 x 1/2 x 2-1/2	3 3/4	KCP39EG59675, 5KCP39DGK013T, WP94X2, WP94X213, WP94X214, WP94X299, WP94X505	F	39,40
D893	PSC	1/6-1/10	265	1075	2	.9-.5	CCW	SLV	1/2 x 2-1/8	3 1/2	WP94X0004 (Stock), 5KCP39CGF4675	G	40
D894	PSC	1/6	277	1650	1	0.8	CW	SLV	1/2 x 2-1/4	3 3/4	5KCP39CGP7275	G	
D1050	PSC	1/8	230	1550	1	1.1	CW	SLV	1/2 x 3	3 1/4	A/C Condenser, KSP29DK1728S	H	141
D264	PSC	1/8	230	1550	1	1.1	REV	SLV	1/2 x 5	3 1/4	A/C Cond. Fan Motor	H	
D1086	PSC	1/12-1/25	277	1625	2	.6-.2	CCW	SLV	6-1/2 x 1/2 x 6-1/2	3 1/4	5KCP29CK3586AS	I	

NOTES: 39: Rotation determined by viewing lug end 40: 4M 370V Capacitor 48: 7.5M 370V Capacitor 141: Original motor is SP, D1050 is PSC to provide greater motor efficiency and permit closing of shaft end to prevent moisture from entering.



FIG. A **D868**



FIG. B **A110**



FIG. C **A111**



FIG. D **D862**



FIG. E **D896**



FIG. F **D897, D898**



FIG. G **D893, D894**



FIG. H **D1050, D264**



FIG. I **D1086**

FASCO MODEL	TYPE	HP	VOLTS	RPM	SPD.	AMPS	ROT.	BRNG.	SHAFT DIM.	"A" DIM.	CROSS REF.	FIG.	NOTES
GENERAL ELECTRIC (cont.)													
▶ D2850	PSC	1	208-230/460 60Hz	1125	1	4.6/2.3	CW	BALL	1/2 x 3.45	6 1/2	X70670706010, X70671180017, 5KCP39SFL19KS, 5KCP39SFL153DS, MOT3771, MOT5717	A	142
		3/4	200/380-415 50Hz	950									
▶ D2851	PSC	1	208-230/460 60Hz	1125	1	4.6/2.3	CW	BALL	5/8 x 3-3/4 KEYED	6 1/2	X70671653-01 (7126-4088), X70671656-01 (7126-4089), X70671654 (7126-4090), X70671652-01 (7126-4299), MOT9192, MOT9188	A	142
		3/4	200/380-415 50Hz	950									
GIBSON-BELDING & KELVINATOR													
D852	PSC	1/5-1/8-1/10	230	1050	3	1.7-1.4-1.1	CW	SLV	5 x 1/2 x 4-1/2	3 3/4	G519203, Window A/C, Franklin No. 80431	B	39
D1853	PSC	1/3-1/4-1/5	230	1090	3	2-1.9-1.8	CW	SLV	6 x 1/2 x 2-7/8	4 1/4	G519243, G505976, K55HXNEC-6830	C	39
D854	PSC	1/3-1/4-1/6	208-230	1365	3	2.8-1.7-1.2	CCW	SLV	4-1/2 x 1/2 x 2-5/8	4 1/2	Franklin X157668, X152275, 82181	D	39,42
D855	PSC	1/3-1/4-1/5	230	1365	3	2.7-2-1.7	DS	SLV	8 x 1/2 x 8-3/4	4 1/4	RAK7024	E	42
D856	PSC	1/3-1/4-1/5	230	1300	3	3.1	CW	SLV	5-1/4 x 1/2 x 3	5	G519244, G505971, K55HXNEM6844	F	39
D1112	PSC	1/15-1/20-1/25	115	1550	3	1.5-1-9	CW	SLV	2-5/8 x 5/16 x 2-7/8	4	506601, 507007, 506720, 80126	G	39,42
GOODMAN													
A140	SP	1/50	115	3400	1	1.4	CW				7021-9087, 7021-9000	H	
A157	SP	1/35	115	3000	1	1.3	CCW				7002-2307	I	
A162	SP	1/50	208-230	3000	1	0.5	CCW				7021-8656	J	
A079	SP		115	3000	1	1.1	CCW				7021-6804	K	

NOTES: 39: Rotation determined by viewing lug end 42: 3M 370V Capacitor 142: Not a direct replacement, but suitable for reference models.



FIG. A **D2850, D2851**



FIG. B **D852**



FIG. C **D1853**



FIG. D **D854**



FIG. E **D855**



FIG. F **D856**



FIG. G **D1112**



FIG. H **A140**



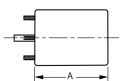
FIG. I **A157**



FIG. J **A162**



FIG. K **A079**



▶ NEW ITEM! See page 113 for a complete listing of all our new products.

Thermally protected • UL recognized • CSA or ULc certified
NOTE: Rotation is determined by looking at shaft end. Shaft length is measured from motor face.



FASCO MODEL	TYPE	HP	VOLTS	RPM	SPD.	AMPS	ROT.	BRNG.	SHAFT DIM.	"A" DIM.	CROSS REF.	FIG.	NOTES
GOODMAN (cont.)													
▶ A181	SP	1/30	115	3192	1	1.5	CW	BALL			7058-0136, 20044403	A	
▶ A182	SP	1/35	115	3125	1	1.2	CCW	SLV			7002-3036, B4059000	B	
▶ A184	SP	1/35	115	3125	1	1.6	CCW	BALL			7058-0229, B40590-01	C	
▶ A187	SP	1/20	208-230	3250	1	0.8	CW	SLV			7021-10006, 20028901	D	
▶ A188	SP	1/18	115	3250	1	1.6	CW	SLV			7021-10958, B4833000	E	
▶ A189	SP	1/24	115	3000	1	1.5	CW	SLV			7021-7302, D9868620	F	
▶ A281	SP	1/40	115	3000	1	0.9	CW	SLV			7021-8252, D6996405	G	
▶ A282	SP	1/60	220 50Hz	2600	1	0.45	CCW	SLV			7021-8448, B18590505	H	
▶ A284	SP	1/30	208/240	3000	1	.59/.50	CW	SLV			7021-9227, D9886202	G	
▶ A285	SP	1/40	115	3250	2	1.4	CW	SLV			7021-9236, B2833002	I	
▶ A288	SP	1/30	115	3100	2	1.4/.65	CW	BALL			7021-9727, 11177202	J	
▶ A290	PSC	1/20	115	3200/2400	2	0.7	CCW	BALL			7062-5015, 20245903	K	
GREENHECK FAN													
▶ D1061	SP	1/20-1/30-1/60	115	1500	3	2-1.7-1.4	CCW	SLV	1/2 x 2-3/4		7108-2425	L	
GSW													
▶ W7	SP	1/25	115	3200	1	1.3	CW	SLV			7021-8347, 63217	M	137
▶ W8	SP	1/25	115	3200	1	1.3	CW	SLV			7021-9756, 63172	N	137
HEATCRAFT													
▶ D1122	PSC	1/16	208-230	1650/1300	1	0.4	CW	SLV	5/16 x 1-5/8	3 5/8	7190-2255, 25308601	O	143

NOTES: 137: Water heater draft inducer 143: 2M 370V Capacitor



FIG. A A181



FIG. B A182



FIG. C A184



FIG. D A187



FIG. E A188



FIG. F A189



FIG. G A281, A284



FIG. H A282



FIG. I A285



FIG. J A288



FIG. K A290



FIG. L D1061



FIG. M W7



FIG. N W8



FIG. O D1122



FASCO MODEL	TYPE	HP	VOLTS	RPM	SPD.	AMPS	ROT.	BRNG.	SHAFT DIM.	"A" DIM.	CROSS REF.	FIG.	NOTES
HEATCRAFT (cont.)													
D1123	PSC	1/15	208-230 50/60Hz	1550	1	0.5	CCW	SLV	5/16 x 2-5/8	3 7/8	7190-2285, 25309101	A	40
HEAT N GLOW													
A133	SP	1/50	115	3000	1	1.2					7002-1241	B	
HEIL-QUAKER													
A064	SP	64CFM	115	3150	1	0.7	CW				610172, 7021-5043	C	
D2810	PSC	1/6	208-230	1100	1	1	CCW	SLV	1/2 x 2		HQ 1050892EM, KA55HXHNK-2379	D	
D1071	PSC	1/6	208-230	1100	1	0.99	REV	SLV	1/2 x 2-1/8		HQ 1052662EM, 48HXCLW-1562	E	
A148	SP		208-230	3000	1	0.5	CCW				7021-9237	F	
A151	SP		230	2800	1	0.3	CW				INTER CITY, HQ1050144	G	
HERMAN NELSON													
D829	PSC	1/4	115	825	1	3.8	REV	SLV	1/2 x 2	5 5/8		H	
D880	PSC	1/4	115	1050	1	4.3	CCW	BALL	1 1/2 x 1-1/2	5 1/2		I	
D827	PSC	1/8	115	700	1	2.5	CCW	BALL	1/2 x 2	5 1/2	7-150444-02	I	
HILL REFRIGERATION													
D801	PSC	1/3	208-230	1625	1	2.9	CCW	SLV	1/2 x 4	4 1/2	5KCP39KG1369S	J	
D800	PSC	1	208-230	1075	1	7.1-6.4	CW	BALL	1/2 x 3-3/4	5 1/4	PP19162G, 5KCP39GC030S, 5KCP39PGC910S	K	91,144
HONEYWELL AIR CLEANER													
D1054	SP	1/12-1/20-1/25	115	1050	3	3.1-2.1-1.5	CW	SLV	1/2 x 2-1/2	2 5/8	190386A, 5KSP29DK1906S	L	
HUSSMAN													
D807	PSC	1/6	208-230	1625	1	1.2	CCW	BALL	1/2 x 4-7/8	3 3/4	5KCP39EGC244T, 5KSP39FG4771S	M	40
D890	PSC	1/2	208-230	1725	1	2.7	CCW	SLV	1/2 x 3-1/2	4 1/2	259983, K55HXCTP-9963	N	
K114	SP	1/500	115	3000	1	0.64	CCW	SLV	.181 x 1.75		301-5734	O	145

NOTES: 40: 4M 370V Capacitor 91: 15M 370V Capacitor 144: Separate connection for each voltage 145: Equipped with KFAN6046 fan blade



FIG. A D1123



FIG. B A133



FIG. C A064



FIG. D D2810



FIG. E D1071



FIG. F A148



FIG. G A151



FIG. H D829



FIG. I D880, D827



FIG. J D801



FIG. K D800

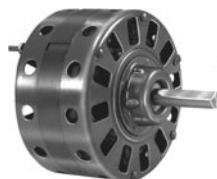


FIG. L D1054



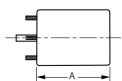
FIG. M D807



FIG. N D890



FIG. O K114



Thermally protected • UL recognized • CSA or ULc certified
NOTE: Rotation is determined by looking at shaft end. Shaft length is measured from motor face.
 NEW ITEM! See page 113 for a complete listing of all our new products.



FASCO MODEL	TYPE	HP	VOLTS	RPM	SPD.	AMPS	ROT.	BRNG.	SHAFT DIM.	"A" DIM.	CROSS REF.	FIG.	NOTES
IEC													
▶ D1040	PSC	1/5-1/10-1/15	208/240	925	3	1.6-.8-.5	CW	SLV	1/2 x 8	4 1/3	5KCP29KK8385S	A	
▶ D1041	PSC	1/15-1/20-1/30	265	1075	3	.6-.3-.2	CW	SLV	1/2 x 7-1/8	3 7/8	5KCP29DK8389S	B	
▶ D1043	PSC	1/4-1/5-1/8	265	1075	3	1.6-1.0-.7	CW	SLV	1/2 x 6-1/4	4 5/8	5KCP29DK8386S	C	
▶ D1044	PSC	1/4-1/6-1/12	115	970	3	6.0-2.7-1.7	CW	SLV	1/2 x 8	4 1/3	5KCP29DK8387S	A	
▶ D1045	PSC	1/30-1/40-1/50	115/127	1100	3	.53-.24-.16	CW	SLV	1/2 x 9	3 1/8	5KCP29BK8382S	D	
▶ D1047	PSC	1/20-1/30-1/50	208/230	1075	3	.6-.3-.2	CW	SLV	1/2 x 7-1/8	3 7/8	5KCP29FK8028S	B	
▶ D1048	PSC	1/20-1/30-1/50	277	1075	3	.5-.2-.1	CW	SLV	1/2 x 7-1/4	3 7/8	5KCP29FK8132S	E	
▶ D1049	PSC	1/20-1/40-1/50	265	1075	3	.4-.2-.1	CW	SLV	1/2 x 7-1/8	3 7/8	5KCP29FK8388S	B	
▶ D1053	PSC	1/30-1/40-1/50	265	1075	3	.38-.20-.14	CW	SLV	1/2 x 7-1/8	3 1/3	5KCP29BK8094S	B	
▶ D1055	PSC	1/12-1/30-1/50	115/127	1375	3	1.4-.6-.4	DS	SLV	9-1/8 x 1/2 x 9-1/2	3 1/8	5KCP29BK8383S	F	
▶ D1059	PSC	1/6-1/12-1/50	115/127	1450	3	2.3-1.4-.5	DS	SLV	8 3/4 x 1/2 x 9	3 1/3	5KCP29DK8384S	F	
ILG													
▶ D115	SP	1/12	115/230	1550	1	2.5-1.3	CCW	SLV	1/2 x 2	4 1/8	78-27-721T, Fasco 7108-2237	G	
▶ D1039	SP	1/10	115	1500	1	3.1	CCW	SLV	1/2 x 2-3/8	4 1/2	78-27-611N, Fasco 7108-2171	H	
INTER CITY													
D1167	SP	1/40	208-230	3000	1	0.55	CCW	SLV	5/16 x 1	4 7/8	1708-518, 7121-5854	I	
A134	SP		115	3060	1	1.5	CW				7021-9335, 7021-8735, 7021-9499, 7021-8736	J	
A145	PSC		115	3450	1	0.7	CCW				7062-4061	K	133
A141	SP		115	2800	1	1	CW				7021-8741, 7021-8742, 7021-9188	L	
A148	SP		208-230	3000	1	0.5	CCW				7021-7617, 7021-9237	M	
A151	SP		230	2800	1	0.3	CW				HEIL QUAKER, HQ1050144	N	
A169	SP		230	2800	1	0.75	CW				ICP, 7021-10048, 7021-10580	O	

NOTES: 133: 4M 250V Capacitor included



FIG. A D1040, D1044



FIG. B D1041, D1047, D1049, D1053



FIG. C D1043



FIG. D D1045



FIG. E D1048



FIG. F D1055, D1059



FIG. G D115



FIG. H D1039



FIG. I D1167



FIG. J A134



FIG. K A145



FIG. L A141



FIG. M A148



FIG. N A151



FIG. O A169

FASCO MODEL	TYPE	HP	VOLTS	RPM	SPD.	AMPS	ROT.	BRNG.	SHAFT DIM.	"A" DIM.	CROSS REF.	FIG.	NOTES
INTER CITY (cont.)													
A170	SP		115	2800	1	2.3	CW				ICP, 7021-10702, 7021-10299	A	
A171	PSC	1/25	115	3450	1	0.7	CCW	BALL			7062-4783, 1011412	B	
A172	SP	1/35	115	3000	1	1.6	CW	BALL			7002-2792, 1010975P	C	
A173	PSC	1/18	115	3450	1	0.8	CCW	BALL			7062-4578, 1011350	D	
A174	SP	1/100	115	2350	1	0.8	CW	SLV			7021-9188, 1010239	E	
A175	SP	1/40	115	3300	1	1.0	CCW	SLV			7002-1891, 1708-600P	F	
A176	SP	1/25	115	3100	1	2.2	CW	BALL			7002-2946, 1011899	G	
A177	SP	1/36	115	3000	2	1.4	CW	BALL			7021-10363, 1011632	H	
A178	SP	1/30	115	3400	1	1.8	CW	BALL			7021-10928, 1013388FA	I	
A179	SP	1/60	115	3300	1	0.9	CW	SLV			7021-8693, 1006168P	J	
A301	SP	1/100	115	2350	1	0.1	CW	SLV			7021-9498, 1010239P	E	
A302	SP	1/25	115	3060	1	1.5	CW	SLV			7021-9499, 1010324P, 7021-7700, 1708-607	H	
A304	SP	1/25	115	3060	1	1.5	CW	SLV			7021-9701, 1011021	H	
A306	PSC	1/30	208-230 50/60Hz	3350/2900	2	0.3	CCW	SLV			7062-4532, 1097245	K	
INTERTHERM-ADDISON													
D872	PSC	3/4-1/2	230	1075	2	4.3-3.5	DS	SLV	2 x 1/2 x 6-1/4	5 1/2	5KCP39MGN341T	L	146
D871	PSC	1	230	1625	1	6.6	DS	BALL	6-3/4 x 1/2 x 8	5 1/4	5KCP35PG502S, 7796B, MODBW48A17038A, 8101-338	M	147
ITT REZNOR													
D404	PSC	1/10	208-230	3000	1	0.8	REV	BALL	5/16 x 3-1/4	4 1/4	CW175-40069, 7162-0293, CCW505-43424, 7162-0348, CCW175-40070, 7162-0294	N	21
D405	PSC	1/10	115	3000	1	1.4	REV	BALL	5/15 x 3-1/4	4 1/4	CCW77162-0311, CCW175-43846, CW7162-0224, CW36860	N	21

NOTES: 21: 10M 440V Capacitor included 146: 12.5M 370V Capacitor 147: 10M 440V Capacitor



FIG. A A170



FIG. B A171



FIG. C A172



FIG. D A173



FIG. E A174, A301



FIG. F A175



FIG. G A176



FIG. H A177, A302, A304



FIG. I A178



FIG. J A179



FIG. K A306



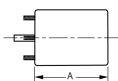
FIG. L D872



FIG. M D871



FIG. N D404, D405



Thermally protected • UL recognized • CSA or ULc certified
NOTE: Rotation is determined by looking at shaft end. Shaft length is measured from motor face.
 NEW ITEM! See page 113 for a complete listing of all our new products.



FASCO MODEL	TYPE	HP	VOLTS	RPM	SPD.	AMPS	ROT.	BRNG.	SHAFT DIM.	"A" DIM.	CROSS REF.	FIG.	NOTES
JAKEL													
A143	SP		115	3000	1	0.95	CW				J238-138-1344	A	
JANITROL													
A073	SP	73CFM	115/230	3000	1	.7-.35	CCW	BALL			82932, 8251560133	B	
A079	SP	73CFM	115	3000	1	1.1	CCW				7021-6804	C	
JENN AIR													
D1173	SP	1/30	115	1500	1	1.2	CW	BALL	5/16 x 2-1/2	3 7/8	70CR	D	
D1170	SP	1/15	115	1500	1	2.1	CW	BALL	3/8 x 2-1/2	4 3/4	80CR	E	
D377	SP	1/12	115	1500	1	3.1	CCW	SLV	3/8 x 2	2 3/4	7108-2101	F	
JOHNSON FURNACE													
A081	SP	80CFM	230	3000	1	0.5	CCW	BALL		3 1/2	HWC Series Unit	G	
A085	SP		230	3000	1	0.7	CCW				AO Smith 464	G	
KEEPRITE													
D1243	PSC	1/20	115	1550	1	0.8	CCW	SLV	5/16 x 2-3/4	4 1/8	501899, 7164-1243, 7164-1854, R370	H	20
D1245	PSC	1/20	230	1550	1	0.4	CCW	SLV	5/16 x 2-3/4	4	501909, 7164-1313, 7164-1853, R371	H	20
D1120	SP	1/20	115	1500	1	2.1	CW	SLV	5/16 x 2-1/2	3 1/2	7163-8722, 1043336	I	
D1121	SP	1/20	208-230	1550	1	1.0	CW	SLV	5/16 x 2-1/2	3 1/2	7163-8861, 1043766	I	
D1246	SP	1/15	115	1550	1	2.3	CCW	SLV	3/8 x 1-3/4	3 1/2	81356, 7108-2206	J	
KOLD-DRAFT®													
VS62-13	PSC	1/10	115	13	1	1.32		BALL	5/8 x 2-1/4 Threaded		Flaker Ice Machine Gearmotor, V00682AU62	K	
KRACK REFRIGERATION													
D1158	SP	1/20	115/208-230	1550	1	1.4-.8	CW	BALL	5/16 x 1-5/8	3 5/16	Commercial Refrigeration Units	L	
D1189	SP	1/20	115/208-230	1550	1	1.4-.76	CW	BALL	5/16 x 1-5/8	3 1/8	11528, 11529, JB2P046N, JA2P216N, JA2P217N, JB2P047N, 8354110940, 8254111030	M	

NOTES: 20: 4M 370V Capacitor included



FIG. A A143



FIG. B A073



FIG. C A079



FIG. D D1173



FIG. E D1170



FIG. F D377



FIG. G A081, A085



FIG. H D1243, D1245



FIG. I D1120, D1121



FIG. J D1246



FIG. K VS62-13



FIG. L D1158



FIG. M D1189

FASCO MODEL	TYPE	HP	VOLTS	RPM	SPD.	AMPS	ROT.	BRNG.	SHAFT DIM.	"A" DIM.	CROSS REF.	FIG.	NOTES
KRAMER/TRENTON													
D1152	SP	1/20	115	1500	1	1.7	CW	SLV	5/16 x 2-3/8	2 7/8	5KSM59ES2001	A	
D1154	SP	1/20	230	1500	1	1	CW	SLV	5/16 x 2-3/8	3 1/8	JA2R140N	A	
D2862	PSC	1/2	208-230	1075	1	4	REV	BALL	1/2 x 3	6 1/2	5KCP37PN244BS, MTG3041	B	48
LARKIN COIL													
D1101	SP	1/20	115	1500	1	1.9	CCW	SLV	5/16 x 2-1/4	2 3/4	Larkin No. 253-1194, Fasco No. 7163-2113	A	33
D1103	SP	1/20	208-230	1500	1	1.15	CCW	SLV	5/16 x 2-1/4	3	Fasco No. 7163-3371, 252-1195	A	33,148
D863	PSC	1/2	208-230	1075	1	4	REV	SLV	1/2 x 3	6 3/4	SCS0500HI-CPM120-3, 5KCP39PGH728T	C	48
LEAR SIEGLER													
D1046	SP	1/8	115	1070	1	5.1	CW	SLV	1/2 x 2-1/4	3	305313-000-165, 7151-0073, 7151-2826	D	
LENNOX													
A138	SP		120	3000	1	0.7	CCW				7021-8657, 7021-8825	E	
A135	SP		120	3000	1	0.7	CCW				7021-8812, 7021-8819	E	
A163	SP		115	3400	1	1.8	CCW				7021-9450	F	
A164	SP		120	3400	1	0.8	CCW				7021-9593	G	
A200	SP	1/30	115	3000	1	2.0	CCW	SLV			7002-2975, 31L5501	H	
A201	SP	1/30	208-230	3000	1	0.7	CCW	BALL			7021-10055, 41144-002	I	
A202	SP	1/30	115	3400	1	1.8	CCW	BALL			7021-10602, 45037-001	J	
A203	SP	1/20	115	3400	1	1.8	CCW	BALL			7021-10841, 49L5301	K	
A204	SP	1/20	115	3400	1	1.8	CCW	BALL			7021-11406, 83L4101	L	
A205	SP	1/20	120	3000	1	0.7	CCW	SLV			7021-8372, T6-2118	M	
A206	SP	1/25	115	3000	1	1.5	CW	SLV			7021-8473, 65204100/20J8901	N	
A207	SP	1/28	115	3000	1	1.8	CCW	BALL			7058-0217, 60M7901	O	

NOTES: 33: Shell Turbo 68, low temp. oil (-40°F) 48: 7.5M 370V Capacitor 148: Not a direct replacement for 253-1194, but is an acceptable substitute



FIG. A D1152, D1154, D1101, D1103



FIG. B D2862



FIG. C D863



FIG. D D1046



FIG. E A138, A135



FIG. F A163



FIG. G A164



FIG. H A200



FIG. I A201



FIG. J A202



FIG. K A203



FIG. L A204



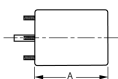
FIG. M A205



FIG. N A206



FIG. O A207



Thermally protected • UL recognized • CSA or ULc certified
NOTE: Rotation is determined by looking at shaft end. Shaft length is measured from motor face.
 NEW ITEM! See page 113 for a complete listing of all our new products.



FASCO MODEL	TYPE	HP	VOLTS	RPM	SPD.	AMPS	ROT.	BRNG.	SHAFT DIM.	"A" DIM.	CROSS REF.	FIG.	NOTES
LENNOX (cont.)													
▶ A208	SP	1/28	115	3000	1	1.8	CCW	BALL			7058-0322, 60M8101	A	
▶ A209	PSC	1/20	115	3200/2800	2	0.8	CCW	BALL			7062-5441, 38M5001	B	
▶ A210	SP	1/30	115	3000	2	1.7	CCW	BALL			7021-11063, 18M6701	C	
▶ A211	SP	1/15	115	3400	1	2.4	CCW	BALL			7021-11634, 81M1601	D	
▶ A213	SP	1/25	115	3200	2	2.1	CCW	BALL			7021-10376, 18L0401	E	
▶ A216	SP	1/25	115	3200	2	2.1	CCW	BALL			7021-10915, 60L1401	E	
▶ A217	SP	1/16	230	3000	1	0.83	CCW	BALL			7021-11231, 25M5501	F	
▶ A218	SP	1/28	220-240	3000	1	.60/.52	CCW	BALL			7021-10676, 39L4201, 7021-8959, 60J4201	G	
▶ A219	SP	1/65	120	3000	1	0.7	CCW	SLV			7021-9262, 88J3901	H	
▶ A320	SP	1/60	115	3000	1	.8	CCW	SLV			7021-9646, 101154-01, 7021-9466	H	
▶ A322	SP	1/70	120	3000	2	1.1	CCW	SLV			7021-9884, 83L8201	I	
▶ A324	PSC	1/12	208-230	3200	1	0.5	CW	BALL			7062-1909, 28G6601	J	
▶ A325	PSC	1/10	208-230	3200	1	0.6	CW	BALL			7062-2845, 7062-4751, 98G8701	K	
▶ A329	PSC	1/12	208-230	3200	1	0.5	CW	BALL			7062-4819, 19L1501	L	
▶ A330	PSC	1/12	208-230	3200	1	0.55	CW	BALL			7062-5546, 7062-4517, 7062-4608, 7062-4083, 69M3301	M	
▶ A331	PSC	1/10	460	3200	1	.38/.33	CW	BALL			7062-5554, 69M3201, 7062-4051, 7062-4518, 97J8101	M	
D1198	SP	1/30	115	3200	1	1.5	CCW	SLV	5/16 x 2-1/4	3 1/8	7121-8774	N	50
D814	PSC	1/4	230	1075	1	1.9	CW	SLV	1/2 x 3	3 3/4	P-8-2702, 5KCP39GGA1245	O	40

NOTES: 40: 4M 370V Capacitor 50: Stainless steel shaft



FIG. A A208



FIG. B A209



FIG. C A210



FIG. D A211



FIG. E A213, A216



FIG. F A217



FIG. G A218



FIG. H A219, A320



FIG. I A322



FIG. J A324



FIG. K A325



FIG. L A329



FIG. M A330, A331



FIG. N D1198



FIG. O D814

FASCO MODEL	TYPE	HP	VOLTS	RPM	SPD.	AMPS	ROT.	BRNG.	SHAFT DIM.	"A" DIM.	CROSS REF.	FIG.	NOTES
LENNOX (cont.)													
D812	PSC	1/3-1/4-1/6-1/8	115	1075	4	6.1-3.2-2.2-1.6	CW	SLV	1/2 x 3-1/8	4 1/4	P-8-7505	A	
D816	PSC	1/3	208-230	1075	1	2.2	CW	SLV	1/2 x 3-3/4	4	P-8-8041-A3048, 5KCP39HG0766T	B	
D818	PSC	1/3-1/5-1/6	115	825	3	7.3-5.1-3.9	CW	SLV	1/2 x 3	6 3/4	P-8-8325, 5KCP39PGD698S	C	146
D2817	PSC	1/3	230	825	1	3.2	REV	SLV	1/2 x 6	5 3/4	5KCP39PG9701S, 5KCP39PG34P0AS	D	
D2814	PSC	1/2	230	1050	1	2.6	CW	BALL	1/2 x 3-1/4	5 3/4	P-8-5770	E	149
D813	PSC	3/4-1/2-1/3	230	1075	3	5.9-3-2.4	DS	SLV	5-1/4 x 5/8 x 6-1/2	6	31C8201, K55HXRYT-8180, K63BHXHW-1158, 5KCP49NG1009, 5KCP35SN49S, P-8-6426	F	92
D2818	PSC	3/4-1/3	230	1075	2	5-2.2	REV	BALL	5/8 x 4-1/2 KEYED	7 3/4	P-8-8711, 5KCP49SG1010S	G	91,150
D2816	PSC	1-1/2-1/3	115	1075	3	11.8-6.3-3.9	REV	BALL	5/8 x 4	7 3/4	P-8-8326, 5KCP49SG1053S	G	101
LOMANCO													
D1008	SP	1/10	115	1500	1	4.4	CW	SLV	1/2 x 1-3/4	3	OLM6151, 322P151	H	
LOREN COOK													
D1100	SP	1/50	115	1550/900	2	1.2/7	CW	SLV	5/16 x 2-3/8	2 7/8	7173-1580, GC/GN 142/144	I	
D1104	SP	1/50	115	1550	1	.9	DS	SLV	2.9 x 5/16 x 2.9	3	7163-6714, 5-10	J	
D1117	SP	1/65	115 50/60Hz	1590	1	0.6	CW	SLV	5/16 x 2-1/4	2 7/8	7163-7818, 615049, GC140	K	
MAGIC CHEF													
D1091	PSC	1/4	208-230	1075	1	2.2	CCW	SLV	1/2 x 2-3/4	4 1/2	35035B001, 322P859, DE3L038	L	
A081	SP		230	3000	1	0.5	CCW	BALL			35035B001, 322P859, DE3L038	M	50,151

NOTES: 50: Stainless steel shaft 91: 15M 370V Capacitor 92: 10M 370V Capacitor 101: 20M 370V Capacitor 146: 12.5M 370V Capacitor 149: 5M 370V Capacitor 150: Not a direct replacement for 5KCP49SG1010S, but is an acceptable substitute. 151: Replacement for Airease

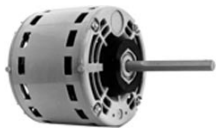


FIG. A D812



FIG. B D816



FIG. C D818



FIG. D D2817



FIG. E D2814



FIG. F D813



FIG. G D2818, D2816



FIG. H D1008



FIG. I D1100



FIG. J D1104



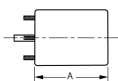
FIG. K D1117



FIG. L D1091



FIG. M A081



Thermally protected • UL recognized • CSA or ULc certified
NOTE: Rotation is determined by looking at shaft end. Shaft length is measured from motor face.
 ▶ NEW ITEM! See page 113 for a complete listing of all our new products.



FASCO MODEL	TYPE	HP	VOLTS	RPM	SPD.	AMPS	ROT.	BRNG.	SHAFT DIM.	"A" DIM.	CROSS REF.	FIG.	NOTES
MATHIESEN													
K161	SP	1/50	115	3000	1	1.05	CCW	SLV	.217 x 1.21		Many Freezer Case Applications	A	
McMILLAN													
D177	SP	1/10-1/20	115	1050	2	3.9-1.7	CCW	SLV	3/8 x 3-5/8	2 5/8	6152-366/6	B	
McQUAY													
D1144	PSC	1/25-1/35-1/65	115	1200	3	1.1-.9-.6	CW	SLV	3/8 x 5-3/8	4 3/4	BA2H015	C	40
D1142	SP	1/15	115/230	1500	1	1.7-9	CW	SLV	5/16 x 2-1/2	3 1/2	879-382-562-ZB-00	D	34
D1140	PSC	1/10-1/12-1/15	115	1500	3	2.2-2-1.7	DS	SLV	5-5/8 x 3/8 x 5-5/8	4 3/4	879-382564B-00	E	48
D1141	PSC	1/15-1/25-1/35	115	1000	3	1.3-1.1-0.9	DS	SLV	5-5/8 x 3/8 x 5-5/8	4 3/4	879-382563B-00	E	40
➤ D915	PSC	3/4-1/2	460	1075	2	2.5-1.6	REV	BALL	5/8 x 4-1/2	5 1/3	F2417-121479, Marathon EWB48A110558AE	F	91,148
MIAMI/CAREY													
D534	SP	1/35-1/100	115	1500	1	1.4-.5	CW	SLV	1/4 x 1	2 1/2	12324L	G	
MILLER													
➤ D1082	SP	1/8	115	1070	1	6	CW	SLV	1/2 x 3-1/4	4	MILLER 103080002, FASCO 7152-0020, U.E., DA3F130N	H	
S156	SP	1/3	115	1050	1	6.6	CW	SLV	1/2 x 3-7/8	3 1/2	MMG Series 80 & 100, MOC Series 80 & 100, CFM Series 80 & 100	I	
MUELLER													
V44-36	SP	1/12-120 in/lbs	115/230	36	1	3.2-2.4	REV	BALL	1/2 x 3-1/2	8 7/8	Mueller V01535A144(30152), Griton V01734AC44, Babson V008227AA44	J	
NORDYNE													
A131	SP		115	3000	1	1.1	CW				7021-9132, 7021-10171, 7021-10159, 7021-9661	K	

NOTES: 34: Bolt Circle = 3.15" 40: 4M 370V Capacitor 48: 7.5M 370V Capacitor 91: 15M 370V Capacitor 148: Not a direct replacement for 253-1194, but is an acceptable substitute

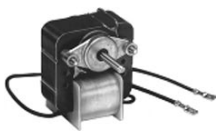


FIG. A **K161**



FIG. B **D177**



FIG. C **D1144**



FIG. D **D1142**



FIG. E **D1140, D1141**



FIG. F **D915**



FIG. G **D534**



FIG. H **D1082**



FIG. I **S156**



FIG. J **V44-36**



FIG. K **A131**

FASCO MODEL	TYPE	HP	VOLTS	RPM	SPD.	AMPS	ROT.	BRNG.	SHAFT DIM.	"A" DIM.	CROSS REF.	FIG.	NOTES
NORDYNE (cont.)													
A132	SP		115	3000	1	1.1	CW				7021-7973	A	
A121	SP	1/45	240	3000	1	0.5	CW	SLV			7021-10381, 6217930	B	
A122	SP	1/17	115	3000	1	1.8	CW	SLV			7021-11227, 6219490	C	
A123	SP	1/18	115	3300	1	2.0	CW	BALL			7021-11385, 622064	D	
A124	SP	1/15	115	3000	1	1.8	CW	SLV			7021-11379, 6219290	E	
A126	SP	1/45	115	3000	1	1.8	CW	BALL			7002-3158, 6219500	F	
NUTONE													
K109	SP	1/75	115	3000	1	0.9	CCW	SLV	.217 x 2.37	C Frame	C-68626, C-68627, 9425F, 9415F, VENT. 9424FA, 9415FA FAN	G	
K111	SP	1/120	115	3000	1	1.1	CCW	SLV	.217 x 1.94	C Frame	65878, Vent Fan	H	
K112	SP	1/50	115	3000	2	1-5	CW	SLV	.217 x 1.46	C Frame	52367, Range Hood	I	
K113	SP	1/70	115	3000	1	1.2	CCW	SLV	.217 x 1.15	C Frame	63675, 9605-N, 9665-N Vent Fan	J	
D540	SP	1/100	115	1500	1	0.6	CW	SLV	1/4 x 2-1/4	2 1/8	Bathroom and Kitchen Vents	K	
D541	SP	1/100	115	1500	1	0.6	CCW	SLV	1/4 x 2-1/4	2 1/8	26750, Bathroom and Kitchen Vents	K	
D1109	SP	1/100	115	1500	1	0.65	CCW	SLV	1/4 x 1-1/4	2 1/16	23405, 23388	L	
D1106	SP	1/50-1/100	115	3000	2	.9-5	CW	SLV	1/4 x 1-3/16	2 9/16	26733, Range Hood Fan Motors	M	
D1107	SP	1/10	115	1550	1	3.2	CCW	BALL	5/16 x 1-3/8	4.00"	Nutone 67176, 32997, UE-JA2S034N, JB2K016N	N	
PATTON													
D824	PSC	1/4-1/8	115	1100	2	3.2-2.4	REV	BALL	1/2 x 3-1/2	5 3/4	7126-0485, 7126-0922	O	40

NOTES: 40: 4M 370V Capacitor



FIG. A A132



FIG. B A121



FIG. C A122



FIG. D A123



FIG. E A124



FIG. F A126



FIG. G K109



FIG. H K111



FIG. I K112



FIG. J K113



FIG. K D540, D541



FIG. L D1109



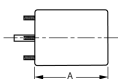
FIG. M D1106



FIG. N D1107



FIG. O D824



NOTE: Rotation is determined by looking at shaft end. Shaft length is measured from motor face.

Thermally protected • UL recognized • CSA or ULc certified

NEW ITEM! See page 113 for a complete listing of all our new products.



FASCO MODEL	TYPE	HP	VOLTS	RPM	SPD.	AMPS	ROT.	BRNG.	SHAFT DIM.	"A" DIM.	CROSS REF.	FIG.	NOTES
PENN VENTILATOR													
▶ D342	SP	1/15	115	1050	1	2.3	CW	SLV	3/8 x 2-1/2	2 5/8	7151-3081, 7151-3565	A	152
▶ D1036	SP	1/20	115	1045	1	1.95	CW	SLV	3/8 x 2-1/8	2 3/8	7151-2139, Roof Top Vent, Z8	A	
PMI/VALCUN HART													
A142	PSC		115	3450	1	0.7	CW				7062-2513	B	40
RHEEM/RUUD													
▶ A240	SP	1/50	115	3000	1	1.1	CCW	SLV			7021-8183, 70-21496-83	C	
▶ A241	SP	1/25	208-230	3200	1	0.6	CW	SLV			7021-9567, 70-23641-81	D	
▶ A242	SP	1/50	115	3400	1	1.4	CW	SLV			7021-7150, 70-22436-01	E	
▶ A243	SP	1/50	115	3400	1	1.4	CW	SLV			7021-7790, 70-22436-02	F	
▶ A244	SP	1/20	208-230	3300	1	0.9	CCW	BALL			7021-6967, 70-42241-01	G	
▶ A245	SP	1/15	208-230	3000	1	.95/.85	CW	BALL			7021-7490, 70-42278-02	H	
▶ A246	PSC	1/20	115	3400/2400	2	0.9	CW	BALL			7062-3925, 70-24206-01	I	
▶ A247	PSC	1/40	115	3250/2800	2	1.0	CW	SLV			7062-5519	J	
D724	PSC	3/4-1/2-1/3-1/4	115	1075	4	9.5-7.2-5.6-3.5	REV	SLV	1/2 x 6	5 3/4	Various	K	91,109
D806	PSC	1/2-1/3-1/4-1/5	115	1075	4	7.3	REV	SLV	1/2 x 3-3/4	4 3/4	51-23012-41	K	109
D2800	PSC	1/2	208-230	1075	1	2.9	REV	SLV	1/2 x 5	5	K55HXMYC-4445, 51-23052-11	L	94
D2834	PSC	1/3	208-230	1075	1	2	DS	SLV	1/2 x 4-1/4	4	51-21853-83	M	94
D2840	PSC	1/5	208-230	1075	1	1.3	CW	SLV	1/2 x 4-1/8	3 3/4	51-21853-82	M	94
D2842	PSC	1/6	208-230	825	1	1.2	CW	SLV	1/2 x 4-1/4	4	51-20760-11	N	94
D832	PSC	1/8	208-230	825	1	1.1	REV	SLV	1/2 x 4-3/4	4	21276-02, 21276-01, 512076-01	O	94
D2844	PSC	1/10	208-230	825	1	0.8	CW	SLV	1/2 x 4-1/4	3 3/4	51-20761-11	N	42,94

NOTES: 40: 4M 370V Capacitor 42: 3M 370V Capacitor 91: 15M 370V Capacitor 94: Has 4 drilled and tapped holes in shell 109: Includes 8 drilled and tapped holes in shell 152: Mounts on (3) P/N 0061-1518 Coleman Mounts



FIG. A D342, D1036



FIG. B A142



FIG. C A240



FIG. D A241



FIG. E A242



FIG. F A243



FIG. G A244



FIG. H A245



FIG. I A246



FIG. J A247



FIG. K D724, D806



FIG. L D2800



FIG. M D2834, D2840



FIG. N D2842, D2844



FIG. O D832



FASCO MODEL	TYPE	HP	VOLTS	RPM	SPD.	AMPS	ROT.	BRNG.	SHAFT DIM.	"A" DIM.	CROSS REF.	FIG.	NOTES
RHEEM/RUUD (cont.)													
D459	SP	1/15	230/460	3000	1	1.2-6	CW	BALL	1/4 x 3	7	HC24AU725A, JB1P044, AB1S078, JB1R039, AB1S029, S88-556	A	
K628	SP	1/200	208-230	3000	1	0.25	CW	SLV	1/4 x 1-1/2	5	51-21964-01, 7102-0628	B	
A079	SP	79CFM	115	3000	1	1.1	CCW				74-70-21504-03-04, 74-70-21496-03-01, JAIM106, JAIM137, 7021-5615	C	
A086	SP	86CFM	115	3200	1	1.3	CW				7021-5990	D	
A090	SP	90CFM	115	3000	1	1.1	CW				RHEEM 70-21496-01, 7021-5239, JAIM102	E	
A136	PSC		115	3450	1	0.75	CW				RHEEM, 7062-3861	F	153
A139	SP		115	3000	1	0.95	CW				RHEEM, 7021-7577	G	
A142	PSC		115	3450	1	0.7	CW				RHEEM, 7062-1881	H	154
REZNOR													
D461	PSC	1/8	480	3200	1	0.32	CCW	SLV	5/16 x 3-1/3	4 1/4	7162-0396	I	
SCHERBA IND.													
A087	PSC	1/6	115/230 50/60Hz	2400	1	2.8/1.1	CCW	SLV			7062-4687, 7062-3496	J	
SEARS/WHIRLPOOL													
D137	SP	1/30-1/65	115	1500	1	1-.7	DS	SLV	3 x 5/16 x 3	2 7/8	Rangehood	K	
D1111	SP	1/18-1/30	115	1330	2	2.4-1.2	CCW	SLV	3-1/8 x 5/16 x 2-3/8	3 1/2	JA2S094, JA2S110, JA2S121N, A456301, A495601, A495603, 5500 BTU Window A/C, G000519549, G519549	L	
D323	PSC	1/15-1/20-1/35	115	1550	3	1-8-6	DS	SLV	2-3/4 x 5/16 x 2-3/4	3 3/4	Small Window A/C	M	42
D325	SP	1/10-1/30	115	1550	2	2.5-2.3	CCW	SLV	1-3/4 x 5/16 x 2-3/8	3 1/2	Small Window A/C	N	39

NOTES: 39: Rotation determined by viewing lug end 42: 3M 370V Capacitor 153: 4M 370V Capacitor rating (not included) 154: 4M 370V Capacitor rating (included)



FIG. A D459



FIG. B K628



FIG. C A079



FIG. D A086



FIG. E A090



FIG. F A136



FIG. G A139



FIG. H A142



FIG. I D461



FIG. J A087



FIG. K D137



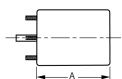
FIG. L D1111



FIG. M D323



FIG. N D325



Thermally protected • UL recognized • CSA or ULc certified

NOTE: Rotation is determined by looking at shaft end. Shaft length is measured from motor face.



NEW ITEM! See page 113 for a complete listing of all our new products.



FASCO MODEL	TYPE	HP	VOLTS	RPM	SPD.	AMPS	ROT.	BRNG.	SHAFT DIM.	"A" DIM.	CROSS REF.	FIG.	NOTES
SEARS/WHIRLPOOL (cont.)													
D857	PSC	1/8-1/12-1/15	115	1100	3	1.7-1.3-1.0	DS	SLV	3-1/8 x 1/2 x 4-1/8	3 1/2	Window A/C Using Delco Inside-Outside Motor 485932, KCP39PG9769S	A	
D858	PSC	1/6-1/8-1/10	230	1100	3	1.1-1-.9	DS	SLV	2-3/4 x 1/2 x 4-1/8	3 3/4	Window A/C Using Delco Inside-Outside Motor 485932, KCP39PG9769S	A	
D859	PSC	1/3-1/5-1/8	230	1100	3	1.7-1.5-1.3	DS	SLV	4-1/4 x 1/2 x 5-1/4	4 1/4	Window A/C Using Delco Inside-Outside Motor 485932, KCP39PG9769S	A	
D860	PSC	1/2-1/4-1/5	230	1075	3	3.2-1.9-1.5	DS	SLV	4-1/4 x 1/2 x 4-3/8	5 3/4	Window A/C Using Delco Inside-Outside Motor 485932, KCP39PG9769S	B	48
SINGER													
D879	PSC	1/4	277	1625	1	1.3	CW	SLV	1/2 x 8	4 1/4	Thru the Wall Commercial 5KCP39G73342	C	107
D1169	SP	1/10	208-230	3000	1	1.5	CCW	SLV	5/16 x 1	5 3/4	FASCO 7121-4066, Comfort Maker 1708-507	D	
D1164	SP	1/25	115/230	1550	1	1.3-.65	CW	SLV	5/16 x 2-1/2	3 1/8	JA2P091N, JA2P0901N	E	
D1167	SP	1/40	208-230	3000	1	0.55	CCW	SLV	5/16 x 1	4 7/8	1708-518, 7121-5854	F	
SKYMARK													
A251	SP	1/35	208 50/60Hz	3000	1	1.1	CCW	SLV			7021-9136, MTR-136PK	G	
STATE IND.													
W9	SP	1/60	115	3000	1	0.95	CW	SLV			7021-10548, 0012400500	H	137
W10	SP	1/20	115	3400	1	1.8	CCW	SLV			7021-11086, 0012400540	I	137
TAPPAN													
A073	SP	73CFM	115-230	3000	1	.7/.35	CCW	BALL			82932, 8251560133	J	

NOTES: 48: 7.5M 370V Capacitor 107: 5M 440V Capacitor 137: Water heater draft inducer



FIG. A D857, D858, D859



FIG. B D860



FIG. C D879



FIG. D D1169



FIG. E D1164



FIG. F D1167



FIG. G A251



FIG. H W9



FIG. I W10



FIG. J A073

FASCO MODEL	TYPE	HP	VOLTS	RPM	SPD.	AMPS	ROT.	BRNG.	SHAFT DIM.	"A" DIM.	CROSS REF.	FIG.	NOTES
TECUMSEH													
D475	SP	1/12	460	1550	1	0.5	CCW	SLV	5/16 x 2-1/2	4 1/2	Tecumseh 810G037A47, 5KCP11FG1197CS	A	
TEMPMASTER/OTASCO													
D1033	PSC	1/5-1/6-1/8	208-230	1400	3	1.6-1.5-1.3	DS	SLV	2-3/4 x 1/2 x 3-1/2		M11730, 322P373, M12100, 322P454	B	
THERMADOR (TRADEWINDS)													
D1165	SP	1/20	115	1550	1	2	DS	SLV	3-1/2 x 5/16 x 3-1/2		Tradewinds/Blower Motors	C	
D1155	SP	1/100	115	1085	1	0.5	CCW	SLV	1/4 x 1		17-09-679, VQT-90, JA2M087R	D	
THERMAL TRANSFER													
D1006	SP	1/4	115	1600	1	7.2	CW	SLV	1/2 x 2-3/4		7108-6544, 66098	E	
TJERNLUND													
D130	SP	1/40	115	1500	1	1	CW	SLV	5/16 x 4-1/8		7163-6058	F	
TRANE													
A069	SP	69CFM	208-240	3000		0.5	CCW				38040252, 82252	G	
A075	SP	75CFM	230	3000	1	0.4	CCW	BALL			38050005	H	
A143	SP		115	3000	1	0.95	CW				7021-8428, 7021-8013, 7021-8924	I	
A146	SP		115	3000	2	1-.35	CW				7021-7986, 7021-8925, 7002-2531	J	
A130	PSC		115	3450	1	0.7	CW				7062-3956, 7062-3616, 7062-5247, 7062-5575, D330757P04, D342094P04	K	
A150	SP		208-230	3000	1	0.5	CCW				7021-7833, 7021-8928	L	
A190	BLDC	1/17	115	VAR	VAR		CW	BALL			7000-5838, X38040336020	M	
A191	SP	1/15	208-230	3000	1	0.8	CCW	SLV			7021-6683, X38040251-01-7	N	
A192	SP	1/40	115	3000	1	1.0	CCW	BALL			7021-8569, X38040253057	O	



FIG. A D475



FIG. B D1033



FIG. C D1165



FIG. D D1155



FIG. E D1006



FIG. F D130



FIG. G A069



FIG. H A075



FIG. I A143



FIG. J A146



FIG. K A130



FIG. L A150



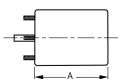
FIG. M A190



FIG. N A191



FIG. O A192



NOTE: Rotation is determined by looking at shaft end. Shaft length is measured from motor face.

Thermally protected • UL recognized • CSA or ULc certified

▶ NEW ITEM! See page 113 for a complete listing of all our new products.



FASCO MODEL	TYPE	HP	VOLTS	RPM	SPD.	AMPS	ROT.	BRNG.	SHAFT DIM.	"A" DIM.	CROSS REF.	FIG.	NOTES
TRANE (cont.)													
▶ A193	SP	1/35	208-240	3480	1	.59/.50	CCW	BALL			7021-8591, X38040050-01-0	A	
▶ A194	SP	1/80	115	3000/1950	2	1.0/.5	CW	SLV			7021-9561, X38020420017	B	
▶ A195	SP	1/16	115	3400	1	1.8	CW	BALL			7021-11543, X38040313070	C	
▶ A196	SP	1/25	115	3200	1	1.4	CW	SLV			7021-11544, D342094P02, 7021-9010, D330757P02	D	
▶ A197	3PH		33-110	1500-4700	VAR	1.0	CW	BALL			7092-0238, D342097P01	E	
▶ A198	SP	1/45	115	3000	1	1.8	CW	BALL			7058-0259, D342077P01	F	
▶ A199	SP	1/45	115	3000	1	1.8	CW	BALL			7058-0260, D342077P02	F	
▶ A260	SP	1/45	115	3250	1	1.0	CW	BALL			7058-0261, D342077P03	F	
▶ A261	SP	1/45	115	3250	1	1.0	CW	BALL			7058-0262, D342077P04	F	
▶ A262	SP	1/45	115	3250	1	1.0	CW	BALL			7058-0263, D34077P05	F	
▶ A263	SP	1/45	115	3250	1	1.0	CW	BALL			7058-0264, D34077P06	F	
▶ A264	SP	1/120	115	3000	2	0.8	CW	BALL			7002-3443, D342078P01	F	
▶ A265	SP	1/125	115	3000	2	0.8	CW	BALL			7002-3444, D342078P02	F	
▶ A266	SP	1/125	115	3000	2	1.0	CW	BALL			7002-3445, D342078P04	F	
▶ A267	SP	1/125	115	3000	2	1.4	CW	BALL			7002-3446, D342078P05	F	
▶ A268	SP	1/45	115	3000	2	1.4	CW	BALL			7002-3447, D342078P06	F	
▶ A269	SP	1/35	208-230 50/60Hz	2500/3000	1	.58/.60	CCW	BALL			7021-11054, X38040363010	G	
▶ A270	PSC	1/15	208-230 50/60Hz	3350/2800	2	.42/.50	CCW	BALL			7062-5033, X38040369010	H	
▶ A271	PSC	1/18	208-230 50/60Hz	3500	2	0.6	CW	BALL			7062-3969, X38040308-01	I	
▶ A272	PSC	1/12	208-230 50/60Hz	3500	2	0.7	CW	BALL			7062-3971, X38040309-01	I	
▶ A273	PSC	1/8	208-230 50/60Hz	3500	2	0.6	CW	BALL			7062-3972, X38040310-01	I	
▶ A274	PSC	1/24	208-230 50/60Hz	3500	1	0.3	CW	BALL			7062-3973, X38040311-01	I	
▶ A276	SP	1/55	115	3000	1	1.0	CW	SLV			7021-9011, D330757P01	D	
▶ A278	SP	1/50	115	3000	2	1.4	CW	BALL			7002-2530, 7002-3276, D341095P02, D341663P03	J	
▶ A279	SP	1/125	115	3000	2	0.8	CW	BALL			7002-2531, D341095P04, 7002-3275, D341663P04	J	



FIG. A A193



FIG. B A194



FIG. C A195



FIG. D A196, A276



FIG. E A197



FIG. F A198, A199, A260,
A261, A262, A263,
A264, A265, A266,
A267, A268



FIG. G A269



FIG. H A270



FIG. I A271, A272, A273,
A274



FIG. J A278, A279



FASCO MODEL	TYPE	HP	VOLTS	RPM	SPD.	AMPS	ROT.	BRNG.	SHAFT DIM.	"A" DIM.	CROSS REF.	FIG.	NOTES
TRANE (cont.)													
▶ A360	SP	1/25	115	2700	2	1.0	CW	BALL			7002-2532, D341095P01, 7002-3274, D341663P01	A	
▶ A361	SP	1/42	115	3000	1	1.6	CW	BALL			7002-2558, D330787P01	B	
▶ A362	SP	1/42	115	3000	1	1.6	CW	BALL			7002-3273, D341663P05	A	
▶ A367	SP	1/60	115	3000	2	1.0	CW	SLV			7021-8051, 21D340096P02	C	
▶ A368	PSC	1/20	115	3200	2	0.8	CW	SLV			7062-3782, D340623P01	D	
▶ A369	PSC	1/45	208-230	2800	2	0.3	CCW	BALL			7062-3915, C663946P01	E	
▶ A370	PSC	1/100	208-230	2920	2	0.2	CCW	BALL			7062-3918, C664099P01	E	
▶ A373	SP	1/35	208-230	3000	1	0.6	CCW	BALL			7021-9396, C665662P01	F	
D1050	PSC	1/8	230	1550	1	1.1	CW	SLV	1/2 x 3		WW94X236SP, WW94X936PSC	G	141
D895	PSC	1/8	208-230	1650	1	0.8	CW	SLV	1/2 x 1-1/2		5KCP39BGR426S, MOT6363	H	40
D1005	PSC	1/10-1/15	460	1075	2	.5-3	DS	SLV	9-5/8 x 1/2 x 9-5/8		5KCP29DK3857BT, MOT4590	I	
D1089	PSC	1/15	115	850	1	1.3	REV	SLV	1/2 x 3		5KCP39DGM458AS, K48HXCFC-1327, MOT3589, MOT3591, FASCO 7176-3020	J	40
D1090	PSC	1/15	115	1100	1	0.8	CW	SLV	10-1/2 x 1/2 x 11-1/2		MOT1877, K48HXBLA-956	K	
D1051	PSC	1/25-1/40	115	1060-500	2	.6-4	DS	SLV	11-1/8 x 1/2 x 11-1/8		Fan Coil	L	136
D1058	PSC	1/20-1/30-1/40	265	1100	3	.5-3-2	CW	SLV	1/2 x 2-1/2		5 KCP29FK885S	M	40
▶ D2850	PSC	1	208-230/460 60Hz	1125	1	4.6/2.3	CW	BALL	1/2 x 3.45	6 1/2	X70670706010, X70671180017, 5KCP39SFL19KS,	N	142
		3/4	200/380-415 50Hz	950							5KCP39SFL153DS, MOT3771, MOT5717		

NOTES: 40: 4M 370V Capacitor 136: 6M 370V Capacitor 141: Original motor is SP, D1050 is PSC to provide greater motor efficiency and permit closing of shaft end to prevent moisture from entering. 142: Not a direct replacement, but suitable for reference models.



FIG. A A360, A362



FIG. B A361



FIG. C A367



FIG. D A368



FIG. E A369, A370



FIG. F A373



FIG. G D1050



FIG. H D895



FIG. I D1005



FIG. J D1089



FIG. K D1090



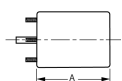
FIG. L D1051



FIG. M D1058



FIG. N D2850



Thermally protected • UL recognized • CSA or ULc certified
NOTE: Rotation is determined by looking at shaft end. Shaft length is measured from motor face.

▶ NEW ITEM! See page 113 for a complete listing of all our new products.



FASCO MODEL	TYPE	HP	VOLTS	RPM	SPD.	AMPS	ROT.	BRNG.	SHAFT DIM.	"A" DIM.	CROSS REF.	FIG.	NOTES
TRANE (cont.)													
▶ D2851	PSC	1	208-230/460 60Hz	1125	1	4.6/2.3	CW	BALL	5/8 x 3-3/4 KEYED	6 1/2	X70671653-01 (7126-4088), X70671656-01 (7126-4089), X70671654 (7126-4090), X70671652-01 (7126-4299), MOT9192, MOT9188	A	142
		3/4	200/380-415 50Hz	950									
20TH CENTURY													
A086	SP		115	3200	1	1.3	CW				7021-5853	B	
TYLER													
D870	PSC	1/4	230	1625	1	1.9	CW	BALL	1/2 x 3	4 3/4	5KCP39EGC053T, Unit No. 760	C	20
UNIFLOW													
VS62-13	PSC	110	115	13	1	1.32		BALL	5/8 x 2-1/4 Threaded		Flaker Ice Machine Gearmotor, V00682AU62	D	
WHITE CONSOLIDATED INDUSTRIES													
D1111	SP	1/18-1/30	115	1330	2	2.4-1.2	CCW	SLV	3-1/8 x 5/16 x 2-3/8	3 1/2	JA2S094, JA2S110, JA2S121N, A456301, A495601, A495603, 5308013815, 5500 BTU Window A/C	E	
WEIL McLAIN													
D1190	SP	1/30	115	3000	1	1.6	CW	SLV	5/16 x 1-3/4	4 7/8	7121-5750, JA1N074	F	
WEST BEND/McGRAW EDISON													
D1134	SP	1/50-1/65-1/80	115	1500	3	1.1-.8-.6	CW	SLV	1/4 x 1-3/4	2 1/4	Portable Humidifier Motors	G	
WESTINGHOUSE													
D262	PSC	1/5	230	925	1	2.3	REV	SLV	1/2 x 4	3 7/8	Whisperaire 319P300A	H	
D1032	PSC	1/5	208-230	1550	1	1.6	DS	SLV	6-1/4 x 1/2 x 6-1/4	3 7/8	Model No. 319P367A	I	20
D1111	SP	1/18-1/30	115	1330	2	2.4-1.2	CCW	SLV	3-1/8 x 5/16 x 2-3/8	3 1/2	JA2S094, JA2S110, JA2S121N, A456301, A495601, A495603, 5308013815, 5500 BTU Window A/C, G000519549, G519549	E	
WITT													
D1102	PSC	1/20	115/230	1550	1	.75-.4	CW	SLV	5/16 x 2-5/8	3 1/2	7190-2158, 8216073, 7190-2159, 8216074	J	

NOTES: 20: 4M 370V Capacitor included 142: Not a direct replacement, but suitable for reference models.



FIG. A **D2851**



FIG. B **A086**



FIG. C **D870**



FIG. D **VS62-13**



FIG. E **D1111**



FIG. F **D1190**



FIG. G **D1134**



FIG. H **D262**



FIG. I **D1032**



FIG. J **D1102**

FASCO MODEL	TYPE	HP	VOLTS	RPM	SPD.	AMPS	ROT.	BRNG.	SHAFT DIM.	"A" DIM.	CROSS REF.	FIG.	NOTES
WILLIAMSON													
A080	SP	80CFM	115	3000	1	1.1	CW				7021-5510, 02-568	A	
A118	SP	118CFM	115	3000	1	1.8	CW				100,000 BTU Furnace 7021-6999, 7021-7042, Leads must be modified	B	
YORK													
D1191	SP	1/40	460	3200	1	0.37	CCW	BALL	1/4 x 2-1/2	5 3/4	7121-7255	C	49,50,51
D1171	SP	1/15	460	3000	1	0.6	CCW	BALL	1/4 x 2-1/2	6 3/4	024-24115-004, F33HXJBB3621	D	
D1042	PSC	1/5	208-230	1075	1	1.2	DS	SLV	6-1/2 x 1/2 x 6-1/2	4 1/8	Cond. Fan, D1041, F47HXBGM-927	E	
D873	PSC	1/2	230	1050	1	3.2	DS	SLV	9-3/4 x 1/2 x 9-3/4	4 1/2	K44HXJAF-4955	F	
D2871	PSC	1-3/4-1/2	460	1100	3	3.3-2.3-1.9	REV	SLV	1/2 x 3-1/2	6	024-21673, K55HXJFJ-2832, 5KCP39SGH913BS	G	155,156
A063	SP	65CFM	230	3000	1	0.6	CCW				26-22239	H	
A083	SP	83CFM	230	3000	1	0.8	CCW	BALL			026-16323-0000, 026-20224-000, 7021-1373	I	
A144	SP		208-230	3000	1	0.5	CW				7021-6770	J	51
A137	PSC		115	3450	1	0.7	CW				7062-2442, 7062-3342, 7062-3484	K	
A147	PSC		115	3450	1	0.7	CW				7062-3342, 024-25007-700	L	
A154	SP		115	3000	1	1.2	CW				7021-9428	M	
A165	PSC		115	3450	1	0.7	CW				7062-3958	N	
A168	PSC		115	3450	1	0.7	CW				7062-5019	O	

NOTES: 49: Motors include shaft bushing 50: Stainless steel shaft 51: Includes centrifugal switch 155: 25M 370V Capacitor 156: Has special OEM wiring configuration. Not for general purpose 3 speed applications.



FIG. A A080



FIG. B A118



FIG. C D1191



FIG. D D1171



FIG. E D1042



FIG. F D873



FIG. G D2871



FIG. H A063



FIG. I A083



FIG. J A144



FIG. K A137



FIG. L A147



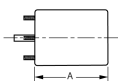
FIG. M A154



FIG. N A165



FIG. O A168



Thermally protected • UL recognized • CSA or ULc certified
NOTE: Rotation is determined by looking at shaft end. Shaft length is measured from motor face.



FASCO MODEL	TYPE	HP	VOLTS	RPM	SPD.	AMPS	ROT.	BRNG.	SHAFT DIM.	"A" DIM.	CROSS REF.	FIG.	NOTES
YORK (cont.)													
▶ A220	SP	1/20	115	3000	1	1.6	CW	BALL			7021-5838, 026-27510-700	A	
▶ A221	SP	1/40	208-230	3000	1	0.6	CCW	SLV			7021-8318, 026-30614-700	B	
▶ A222	SP	1/35	115	3000	1	1.1	CCW	BALL			7021-8317, 026-32067-700	C	
▶ A223	SP	1/30	208-230	3200	1	0.6	CW	SLV			7021-10096, 026-33999-001	D	
▶ A224	SP	1/18	115	3450	2	0.8	CW	SLV			7062-5048, 024-27654-000	E	
▶ A225	SP	1/15	115	3200	1	2.3	CW	SLV			7021-11577, 17503	F	
▶ A226	SP	1/35	115	3000	1	1.7	CW	BALL			7058-0266	G	
▶ A227	PSC	1/25	115	3450	1	0.7	CW	SLV			7062-4708S, 024-27641-000, 17450	H	
▶ A228	SP	1/25	115	3000	1	2.0	CW	BALL			7002-3285, 024-31957-000	I	
▶ A229	SP	1/25	115	3000	1	1.8	CW	BALL			7058-0267S, 17499	J	
▶ A230	PSC	1/20	115	3450	2	0.8	CW	SLV			7062-5094S, 17476	K	
▶ A231	SP	1/75	115	3000	2	1.3	CW	SLV			7021-10213, 17452	L	
▶ A234	PSC	1/12	208-230	3200	1	0.5	CW	BALL			7062-5155, 102529	M	



FIG. A A220



FIG. B A221



FIG. C A222



FIG. D A223



FIG. E A224



FIG. F A225



FIG. G A226



FIG. H A227



FIG. I A228



FIG. J A229



FIG. K A230



FIG. L A231



FIG. M A234